



Swing sink clamp double-acting for external clamping



Applications:

- for direct fastening to a press bed and a press slide when the available space is limited

Design:

Double-acting swing sink clamp with 90° swing cycle. The piston is guided by a guide pin in such a way that during the stroke a 45° rotation is carried out. For clamping, the tie rod is rotated by 90° from the unclamping position and pulled against the clamping surface through the existing clamping slots.

The unclamping, change-over and clamping position are monitored by inductive proximity switches. The swing mechanism is protected by a spring-loaded overload safety device and equipped with manual emergency operation.

Special features:

- very suitable for retrofit
- ideal power transmission
- compact design
- high functional reliability ensured by position monitoring, manual emergency operation and overload safety device
- suitable for large clamping edge tolerances (± 1.5 mm)
- optimum utilisation of bed and slide surface so there are no parts protruding when inserting the die
- die clamping even in barely accessible positions
- tie rod available up to a length of 2000 mm

For power units,
please see product group 7
For accessories,
please see product group 11



Swing sink clamp double-acting for external clamping

Clamping force at	400 bar (kN)	104	216
	100 bar (kN)	26	54
Piston Ø e	(mm)	70	100
Rod Ø d	(mm)	40	56
Max. clamping edge height	(mm)	68	68
Swivelling stroke (i)	(mm)	15	23
Clamping and lowering stroke (h)	(mm)	105	112
Oil consumption clamping	(cm ³)	514	1211
Oil consumption unclamping	(cm ³)	388	948
Max. volume flow	(cm ³ /s)	50	120
a	(mm)	170	212
b	(mm)	240	270
c	(mm)	104	146
f	(mm)	M27x1,5	M36x2
g		G 3/8	G 1/2
j		G 1/4	G 1/4
k	(mm)	42	55
l	(mm)	50	71
m	(mm)	38	57
n	(mm)	25	34
o	(mm)	39,8	62
p	(mm)	14	18
q	(mm)	17,3	27,6
r	(mm)	62,5	84
s	(mm)	104	146
t	(mm)	10	23
u	(mm)	40	50
v	(mm)	60	65
w	(mm)	16,7	27,6
x	(mm)	22,6	22,6
y	(mm)	4,2	0
z	(mm)	24	31
SW	(mm)	14	22
Weight	(kg)	16,5	35
Part no.			
without check valve		2235 310	2237 310
with check valve pilot controlled		2235 410	2237 410

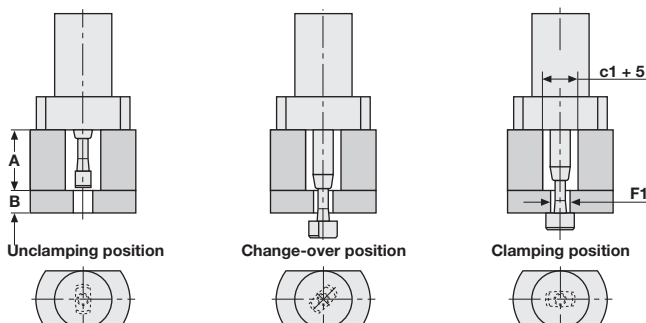
Max. operating pressure: 400 bar

Other sizes and special designs are available on request

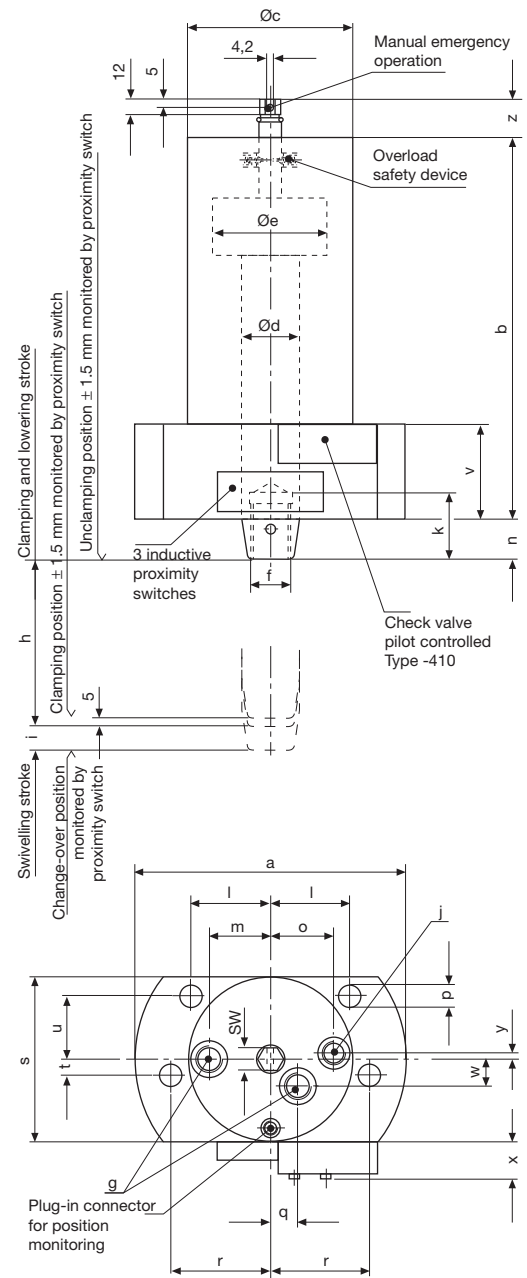
Tie rod dimensions

Swing sink clamp		2235-XXX				2237-XXX		
F1 clamping slot								
in the die	(mm)	32	40	45	50	45	50	60
a1	(mm)	22	22	22	22	32	32	32
b1	(mm)	28	28	28	28	40	40	40
c1	(mm)	54	62	67	72	77	82	92
d1	(mm)	28	28	28	28	40	40	40
e1	(mm)	30	30	30	30	37	37	37

When ordering, please specify the dimensions A (slide plate), B (die clamping edge thickness) and F1 (clamping slot)



Clamping element



Tie rod

