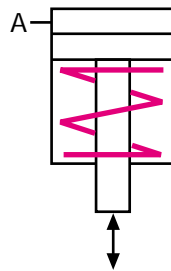




Angular clamp single-acting



Applications:

- ▶ on press beds and rams
- ▶ on machines and equipment for clamping and locking
- ▶ when the available space is limited
- ▶ when temperatures may reach 120° C

Function:

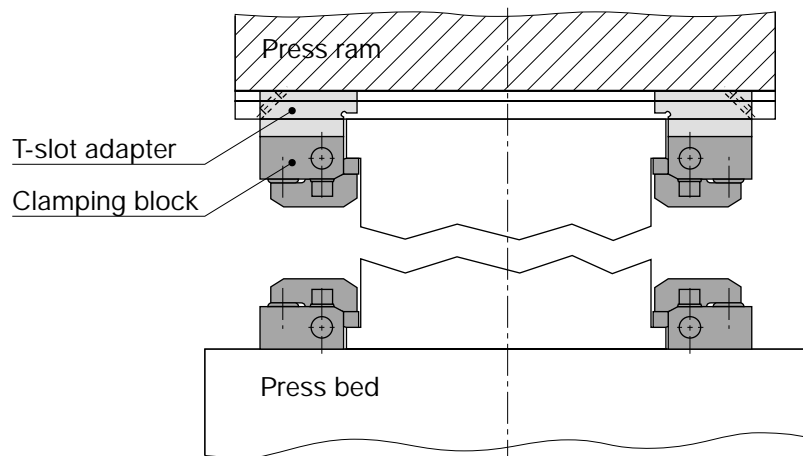
The angular clamp is manually placed in the T-slot provided in press ram or bed. The die is clamped on its clamping edge by applying hydraulic pressure to the piston and mechanically unclamped by a spring return. The clamping block may also be fastened directly, without a T-slot adapter.

Special features:

- ▶ Ideal power transmission
- ▶ Compact design
- ▶ Easy fastening
- ▶ Suitable for small clamping edges
- ▶ Suitable for retrofit
- ▶ No need for die standardisation (width and depth)

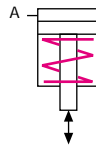
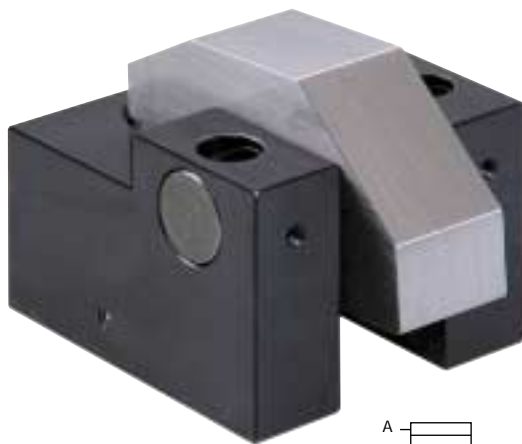
For power units
please see product group 7
For accessories
please see product group 11

Example for application





Clamping block - Angular clamp single-acting with spring return



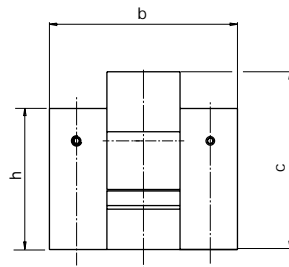
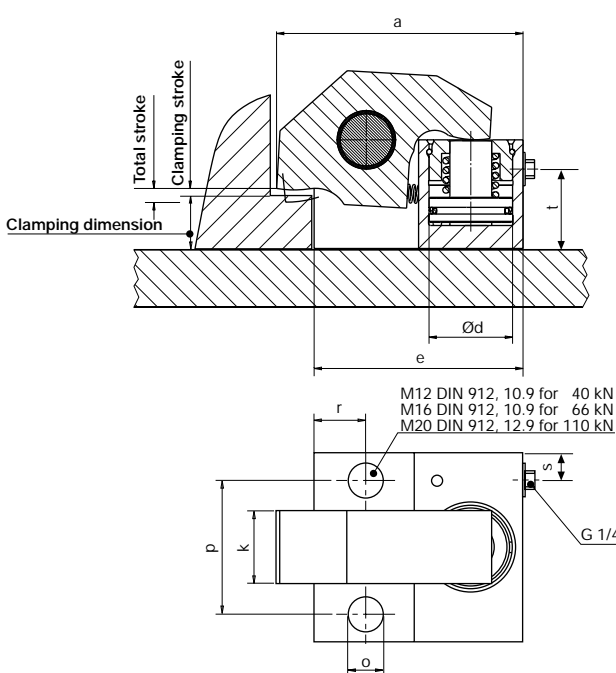
Applications:

- ▶ on press beds and rams
- ▶ on machines and equipment for clamping and locking
- ▶ when the available space is limited

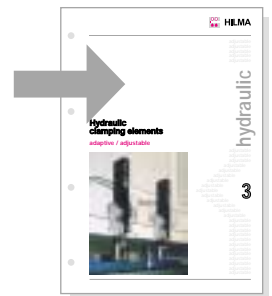
Function:

The workpiece is clamped on its clamping edge by applying hydraulic pressure to the piston and mechanically unclamped by spring return.

The clamping block may be fastened directly to the press bed or flexibly so that it may be moved in combination with a T-slot adapter in the T-slots of a press bed or ram.



For clamping block with T-slot adapter: see product group 3



Hydraulic clamping block without T-slot adapter

Part no.	Clamping force at 400 bar (kN)	Clamping force at 100 bar (kN)	Total stroke (mm)	Clamping stroke (mm)	Clamping dimension (mm)	Oil consumption (cm ³)	Dimensions in mm												Weight (kg)
							a	b	c	d	e	h	k	o	p	r	s	t	
8.2312.0101	40	10	5,5	2,5	20,5	6,5	101	75	77	32	85	62,5	25	12,5	50	20	13	32	2,6
8.2314.0501	66	16,5	6	3	25	10	118	90	85	40	100	67,5	35	16,5	64	25	13	38	4,0
8.2315.0501	110	27,5	6	3	32	16	147	120	105	50	125	85,0	55	22,0	90	30	20	45	8,6

Max. operating pressure: 400 bar.

Other sizes are available on request. Please consult us if aggressive fluids are used

Fastening screws are not included.

With position control for version 66 kN, Part No.: 8.2314.0504