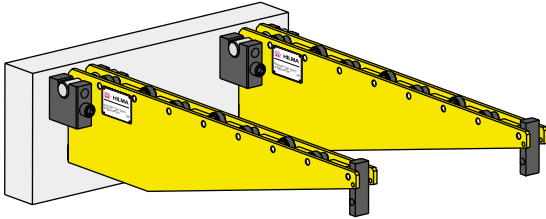




Carrying consoles

for easy and efficient die change on the press bed



Carrying console, hanging

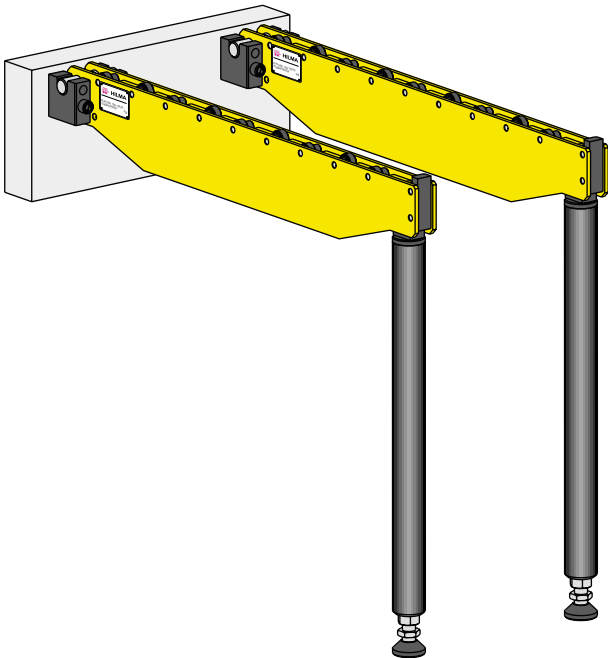
The carrying consoles are hung in the hooks on the die changing side of the press. The hooks are supplied with the consoles. The consoles are used as a pair only. Their size must be selected to suit the highest die weight.

The die is loaded onto the consoles using a crane or a forklift truck.

The carrying rollers consist of high-strength hardened needle bearings. The end stop can be bypassed in one direction only.

The surface is provided with a shock-resistant coating in RAL 1004, golden yellow.

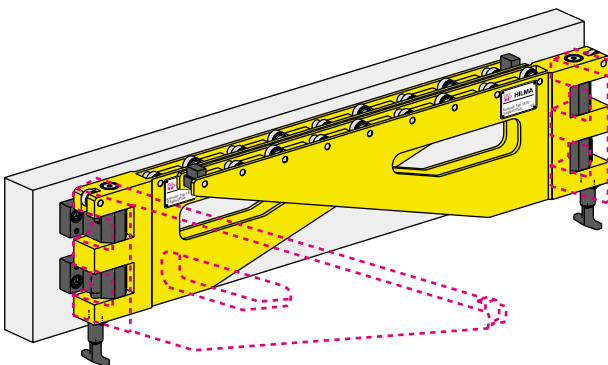
Hanging consoles may be used for several presses. In this case, an additional set of hooks is required.



Carrying console, supported

In order to cope with heavy and large dies, the hanging console is provided with an additional support.

For compensating for unevenness on the floor, the supports are designed as adjustable supports with a ball-and-socket joint. The height may be changed subsequently by ± 60 mm. The end stop can be bypassed in one direction only.



Carrying console, swivelling

This console is permanently fastened to the press bed and can be pivoted into the die changing position. This type is particularly recommended when the available space in front of the press bed is limited, or if removal and intermediate storage of the console is not possible or required.

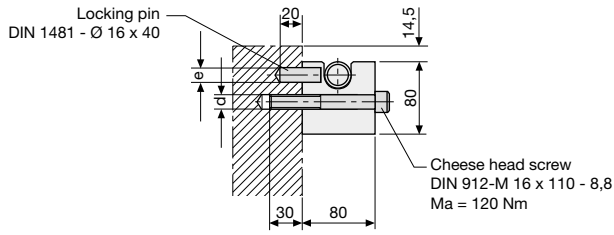
For carrying rollers, end stop and surface coating, see above.

Special designs of carrying consoles are available on request.

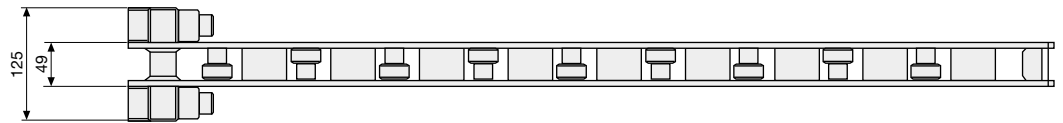
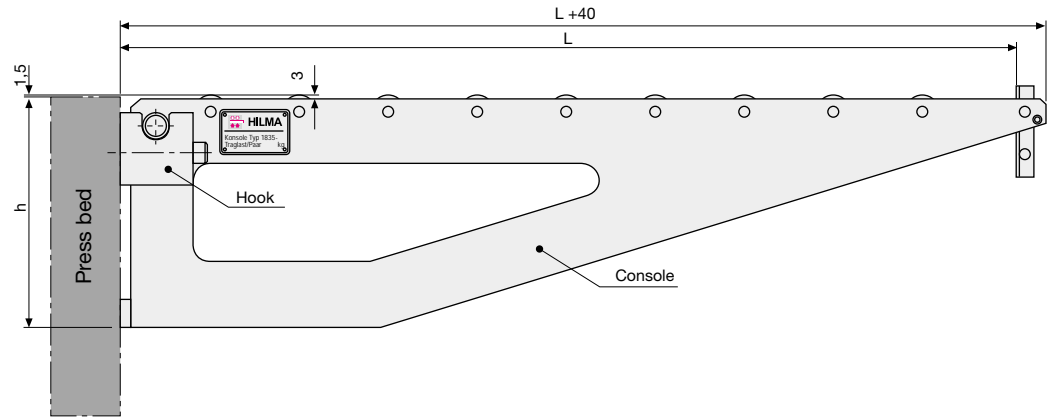
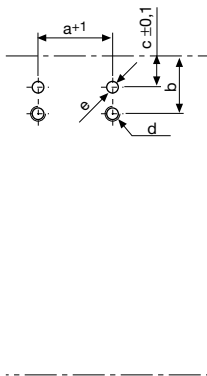
Carrying console, hanging



HILMA



Hole pattern



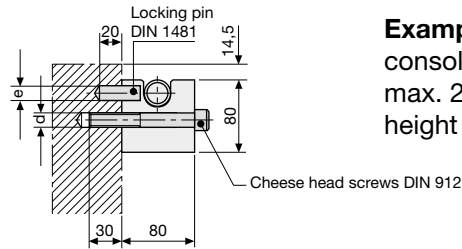
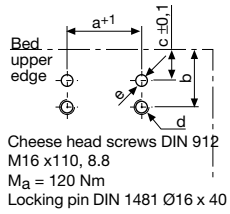
Part no. for 1 pair	Load-carrying capacity (kN)	Length of support (L) (mm)	Dimensions (mm)						Weight /pair (kg)
			a+1	b	c±0,1	d	e	h	
8.1835.0001	5	500	86	60	30	M16	Ø16	120	15
8.1835.0002	10	500	86	60	30	M16	Ø16	150	18
8.1835.0003	10	800	86	60	30	M16	Ø16	180	30
8.1835.0104	10	1000	86	60	30	M16	Ø16	250	40
8.1835.0105	20	800	86	60	30	M16	Ø16	250	32
8.1835.0006	20	1000	86	60	30	M16	Ø16	300	48
8.1835.0107	20	1250	86	60	30	M16	Ø16	350	70
8.1835.0008	30	800	86	60	30	M16	Ø16	400	48
8.1835.0009	30	1000	86	60	30	M16	Ø16	450	66
8.1835.0010	30	1250	86	60	30	M16	Ø16	500	90

4 hooks are supplied with the consoles

1 additional set of hooks (= 4 OFF)
part no. 7.1835.0007 (40 kN)

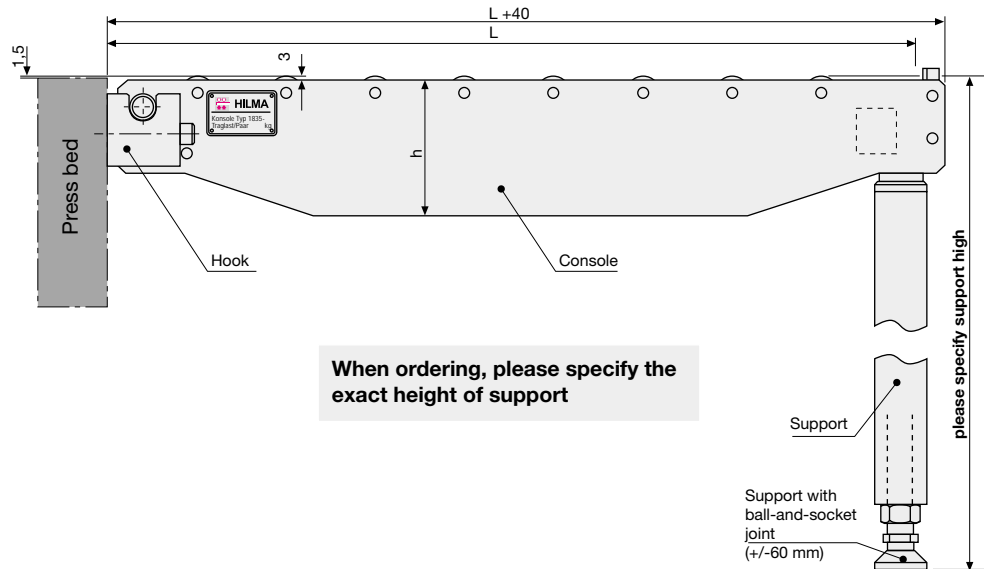
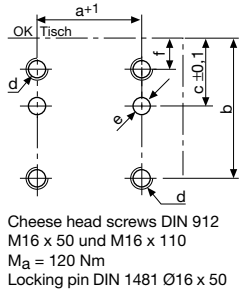


Console 20 - 40 kN



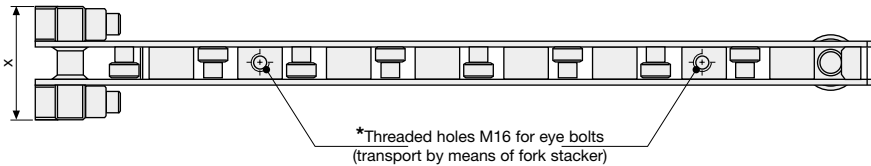
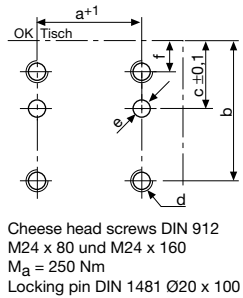
Example of ordering: 8.1835.3001, SH 1000
 console 1000 mm long
 max. 20 kN
 height of support 1000 mm

Console 60 - 100 kN



When ordering, please specify the exact height of support

Console 160 - 250 kN



Part no. for 1 pair	Load-carrying capacity (kN)	Length of support (L) (mm)	Dimensions (mm)								Weight/ pair (kg)
			a+1	b	c±0,1	d	e	f	h	x	
8.1835.3001	20	1000	86	60	30	M16	Ø16	-	150	125	60
8.1835.3102	20	1250	86	60	30	M16	Ø16	-	180	125	80
8.1835.3003	20	1600	86	60	30	M16	Ø16	-	200	125	100
8.1835.3104	40	1000	86	60	30	M16	Ø16	-	200	125	70
8.1835.3005	40	1250	86	60	30	M16	Ø16	-	200	125	85
8.1835.3006	40	1600	86	60	30	M16	Ø16	-	225	125	110
8.1835.3009	60	1000	91	105	45	M16	Ø16	20	200	125	75
8.1835.3010	60	1250	91	105	45	M16	Ø16	20	220	125	90
8.1835.3011	60	1600	91	105	45	M16	Ø16	20	125	125	120
8.1835.3012	60	2000	91	105	45	M16	Ø16	20	125	125	170
8.1835.3013	100	1250	91	105	45	M16	Ø16	20	125	125	100
8.1835.3014	100	1600	91	105	45	M16	Ø16	20	280	125	140
8.1835.3015	100	2000	91	105	45	M16	Ø16	20	320	125	180
8.1835.3016*	160	1600	160	145	75	M24	Ø20	30	230	210	240
8.1835.3017*	160	2000	160	145	75	M24	Ø20	30	260	210	330
8.1835.3018*	160	2500	160	145	75	M24	Ø20	30	280	210	480
8.1835.3020*	250	2500	160	145	75	M24	Ø20	30	360	210	540

4 hooks and 2 supports are supplied with the consoles

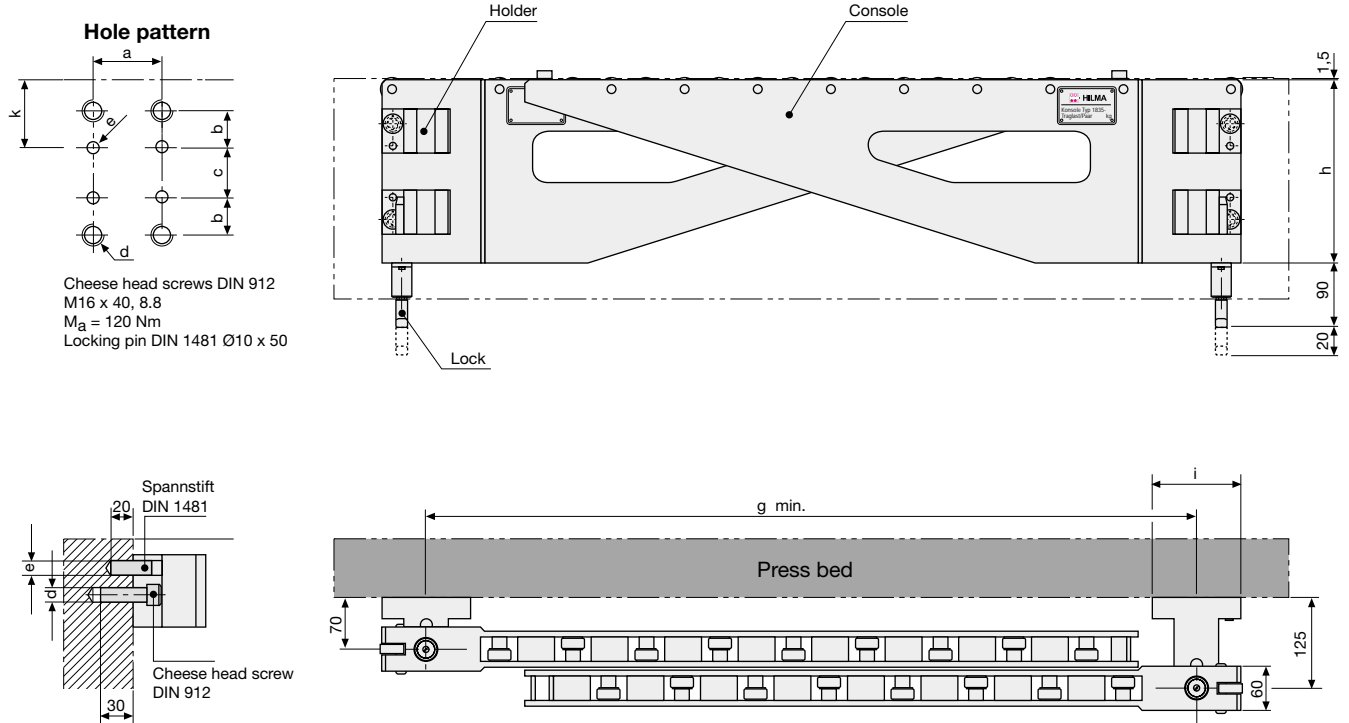
1 additional set of hooks (= 4 OFF)

part no. 7.1835.0007 (40 kN), part no. 7.1835.0021 (100 kN), part no. 7.1835.0022 (250 kN)

Carrying console, swivelling



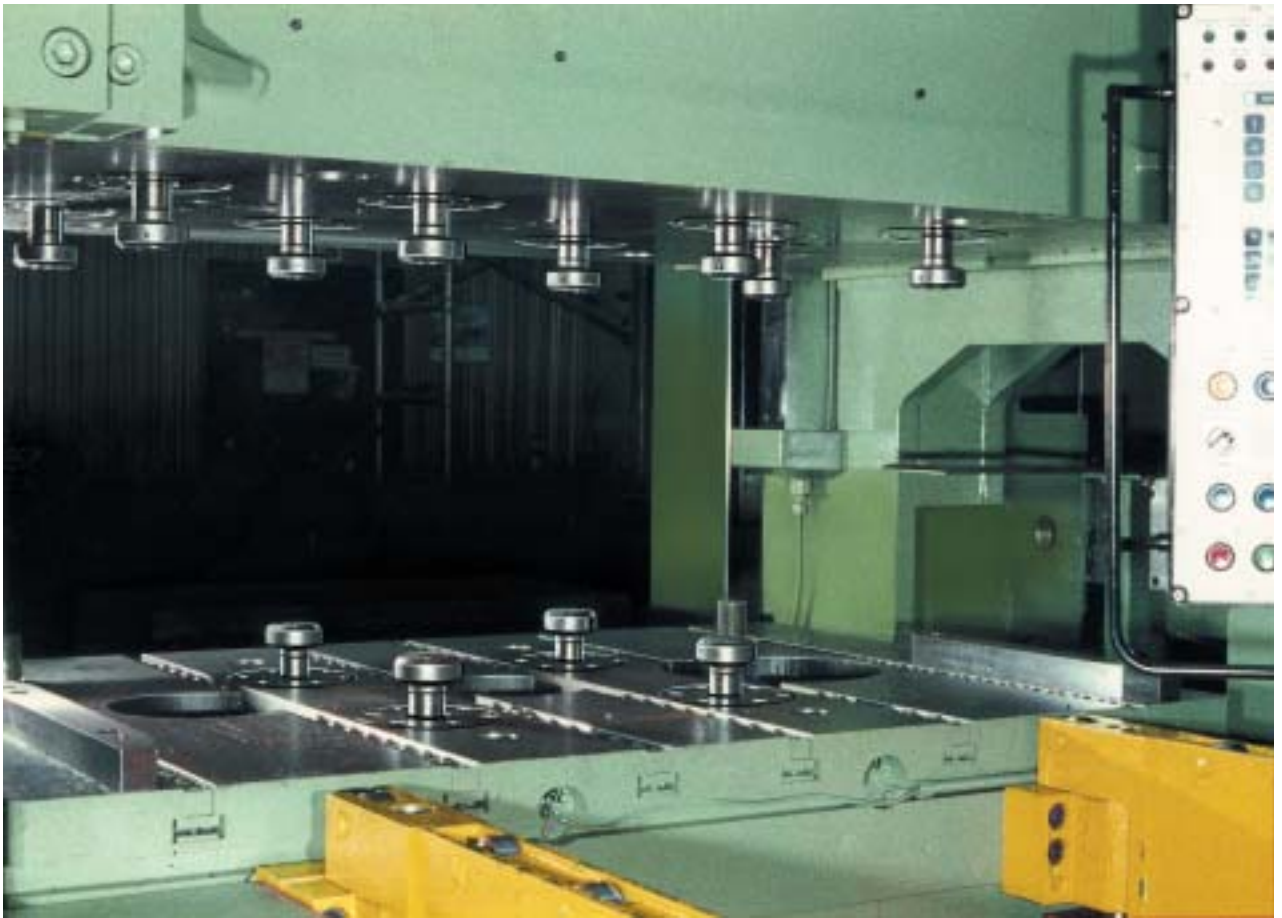
HILMA



Part no. for 1 pair	Load-carrying capacity (kN)	Length of support (L) (mm)	Dimensions (mm)								
			$a \pm 0,2$	$b \pm 0,1$	$c \pm 0,1$	d	e	g	h	i	$k \pm 0,1$
8.1835.1001	10	500	90	30	20	M16	$\text{Ø}10$	550	200	120	91,5
8.1835.1002	10	1000	90	30	70	M16	$\text{Ø}10$	1050	250	120	91,5
8.1835.1003	20	1000	90	30	120	M16	$\text{Ø}10$	1050	300	120	91,5
8.1835.1004	20	1250	90	30	170	M16	$\text{Ø}10$	1300	350	120	91,5
8.1835.1005	40	1000	90	30	210	M16	$\text{Ø}10$	1050	450	120	121,5
8.1835.1006	40	1250	90	30	260	M16	$\text{Ø}10$	1300	500	120	121,5
8.1835.1007	60	1000	90	30	310	M16	$\text{Ø}10$	1050	550	120	121,5
8.1835.1008	60	1250	90	30	460	M16	$\text{Ø}10$	1300	700	120	121,5

Carrying consoles are supplied in pairs with holders fastened, ready for connection

Special designs and double-swivel consoles are available on request.

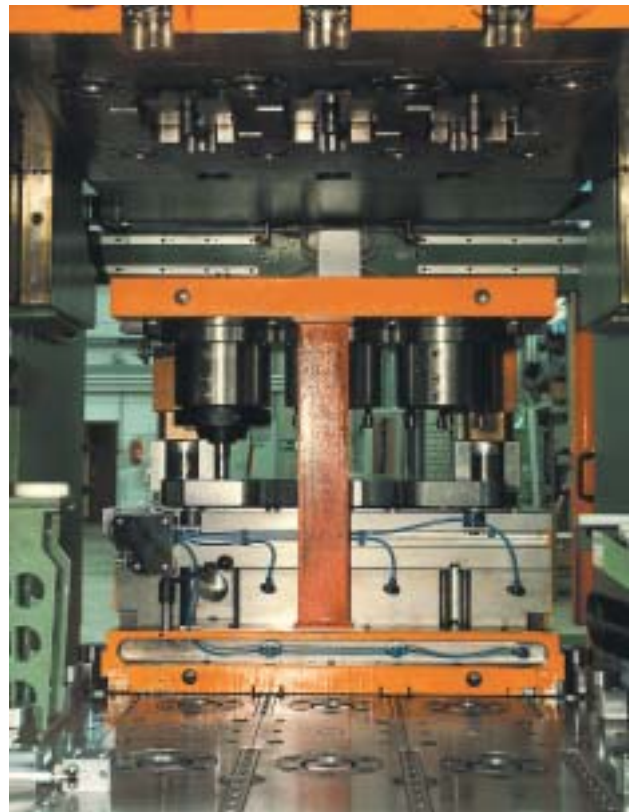


Pull-type clamping elements in press bed and press ram. Loading of dies using consoles and ball bars



Use of sliding clamps in a double-column press, in press bed and press ram. Loading of dies using consoles (front area)

Practical applications of hydraulic clamping elements



Swing sink clamping elements in press bed and press ram. Loading of dies using hydraulically operated roller bars in the slots in the bed.

From practice:

Partners with expertise:

We are members of the Römheld Group, and we benefit from numerous synergies which result from co-operation between companies specializing in various branches of technology. In our relationships we are globally orientated and we act as partners with industrial customers in many countries worldwide.

**Clamping technology,
assembly and handling
technique, linear systems,
power units**



ROEMHELD

Römheld GmbH Friedrichshütte
Römheldstraße 1-5 · D-35321 Laubach
Phone: +49 (0) 64 05 / 89-0 · Fax: +49 (0) 64 05 / 89-2 11
E-Mail: info@roemheld.de
www.roemheld.de

**Intelligent zero
point clamping systems**



STARK

Stark Spannsysteme GmbH
Kommingerstr. 48 · A-6840 Götzis
Phone: +43 (0) 55 23 / 6 47 39-0 · Fax: +43 (0) 55 23 / 6 47 39-7
E-mail: verkauf@stark-inc.com
www.stark-inc.com

**Innovative
rotary table systems**



Fertigungstechnik Weißenfels GmbH
Marie-Curie-Straße 6 · D-06667 Weißenfels
Phone: +49 (0) 34 43 / 8 90-0 · Fax: +49 (0) 34 43 / 8 90-1 12
E-Mail: kontakt@ftw.info
www.ftw.info

**Gray cast and nodular
iron castings
complex and machined**



FRIEDRICHSHÜTTE

Friedrichshütte GmbH
Friedrichshütte 11-13 · D-35321 Laubach
Phone: +49 (0) 64 05 / 8 26-2 91 · Fax: +49 (0) 64 05 / 8 26-2 60
E-Mail: info@friedrichshuette.com
www.friedrichshuette.com



**Flexible clamping systems
Machine vices
Die clamping systems
Magnetic clamping technique**



HILMA

Hilma-Römheld GmbH
Schützenstr. 74 · D-57271 Hilchenbach
Phone: +49 (0) 27 33 / 2 81-0 · Fax: +49 (0) 27 33 / 2 81-113
E-Mail: info@hilma.de
www.hilma.de