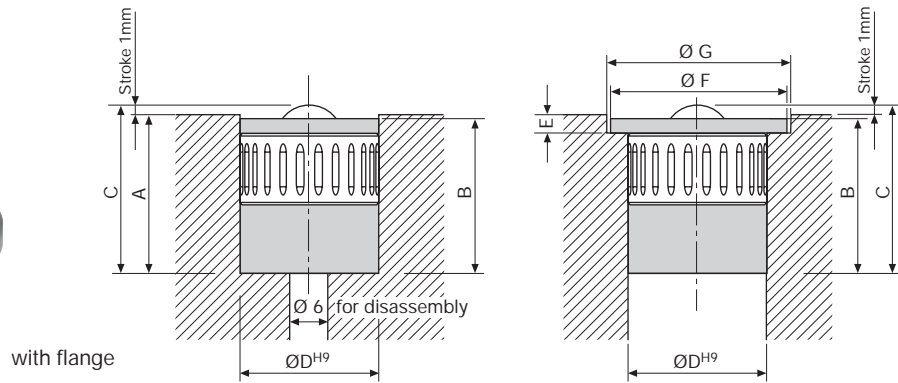




Ball inserts with spring pack



Stroke: 1 mm
Other strokes available on request

Design without flange

Part no.	Max. load (N)	A (mm)	B (mm)	C (mm)	Ø D (mm)
8.1210.0005	200	24,5 +0,2	23,6	25,5	20
8.1210.0011	400	29,0 +0,2	28,5	30,0	24
8.1210.0018	600	35,0 +0,2	34,0	36,0	30
8.1210.0022	1000	47,0 +0,2	44,8	48,0	40

Design with flange

Part no.	Max. load (N)	B (mm)	C (mm)	Ø D (mm)	E (mm)	Ø F (mm)	Ø G (mm)
8.1210.0006	200	23,5	25,2	20	3,5 +0,1	24,5	25 +0,2
8.1210.0012	400	28,5	30,2	24	4,0 +0,1	29,5	30 +0,2
8.1210.0019	600	34,0	36,0	30	5,0 +0,1	34,5	35 +0,2
8.1210.0023	1000	44,0	46,0	40	6,0 +0,1	47,5	50 +0,2



Hilma-Romheld hand pump with manual operation and flanged connection for use on a press bed

Hydraulic hand pump 100 - 400 bar

Especially designed for use in combination with hydraulic roller or ball bars for lifting dies during a die change.

Special features:

- ↗ lifting and lowering of the bars using only one lever
- ↗ pressure relief valve infinitely variable
- ↗ optionally foot operated
- ↗ compact, closed design

Part no.	Max. operating pressure (bar)	Delivery per stroke (cm ³)	Usable oil volume (cm ³)	Hydraulic connection	Weight (kg)
8.4550.0002	100	8	150	G 1/4	7,3
8.4550.0003	400	2	150	G 1/4	7,3