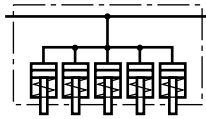




Clamping bar with press-in pistons single-acting, with spring return



Applications:

- ▶ stationary installed on press beds and rams
- ▶ on machines and equipment for clamping and locking
- ▶ clamping force up to 35 kN, piston stroke 6 mm

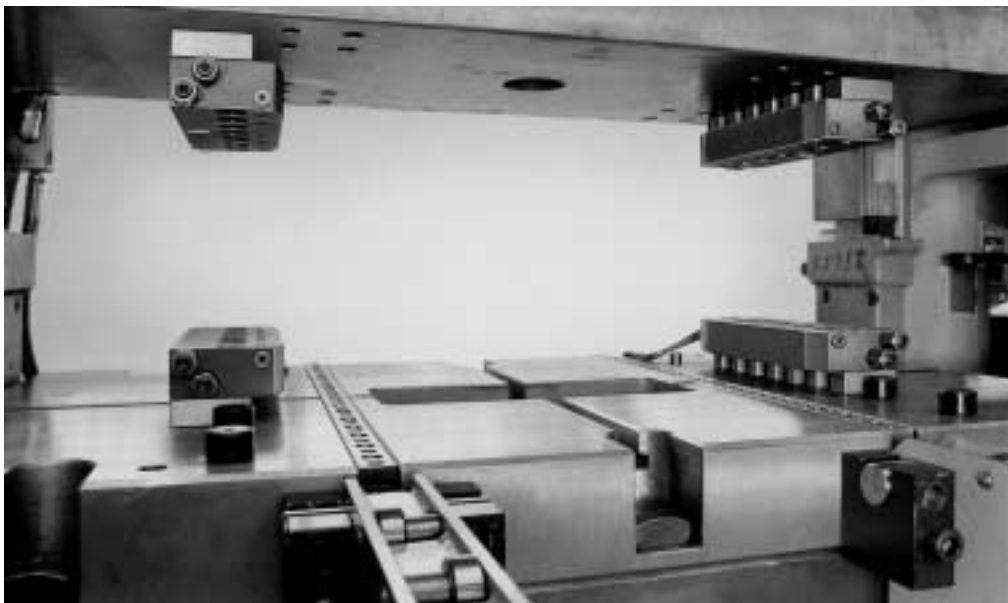
Function:

The clamping bar is mounted on the press bed or ram using a spacer ledge. Clamping is carried out on the die clamping edge by applying hydraulic pressure to the 5 pistons which are arranged side by side with mechanical unclamping by a spring return. Hydraulic oil is supplied through G 1/4 ports provided on both sides. Flat design with die inlet chamfers. Clamping force up to 35 kN uniformly distributed over 5 pistons.

When using several clamping bars in a row, the elements are interconnected by means of hoses or pipes.

Special features:

- ◀ piston stroke 6 mm
- ◀ very flat and compact design
- ◀ the full length of the stroke may be used
- ◀ easy fastening
- ◀ suitable for retrofit

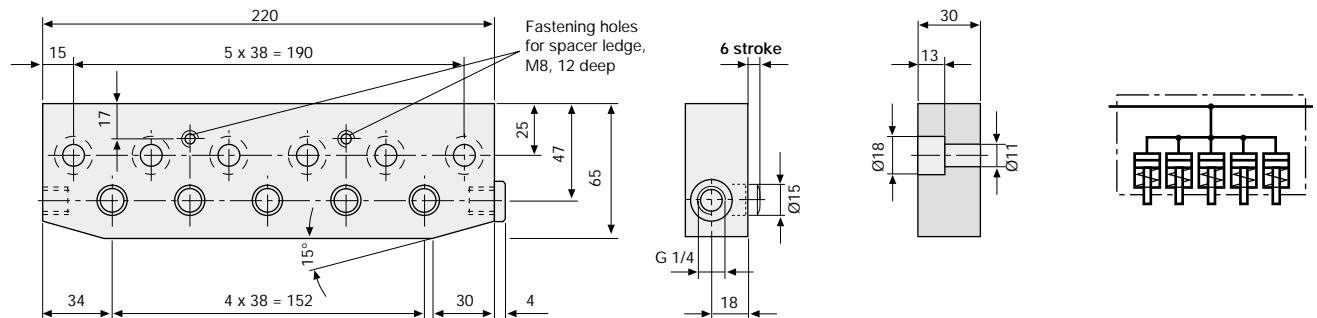


Clamping bars installed in press bed and ram.
Easy loading of dies using die change consoles and lateral guide rollers.



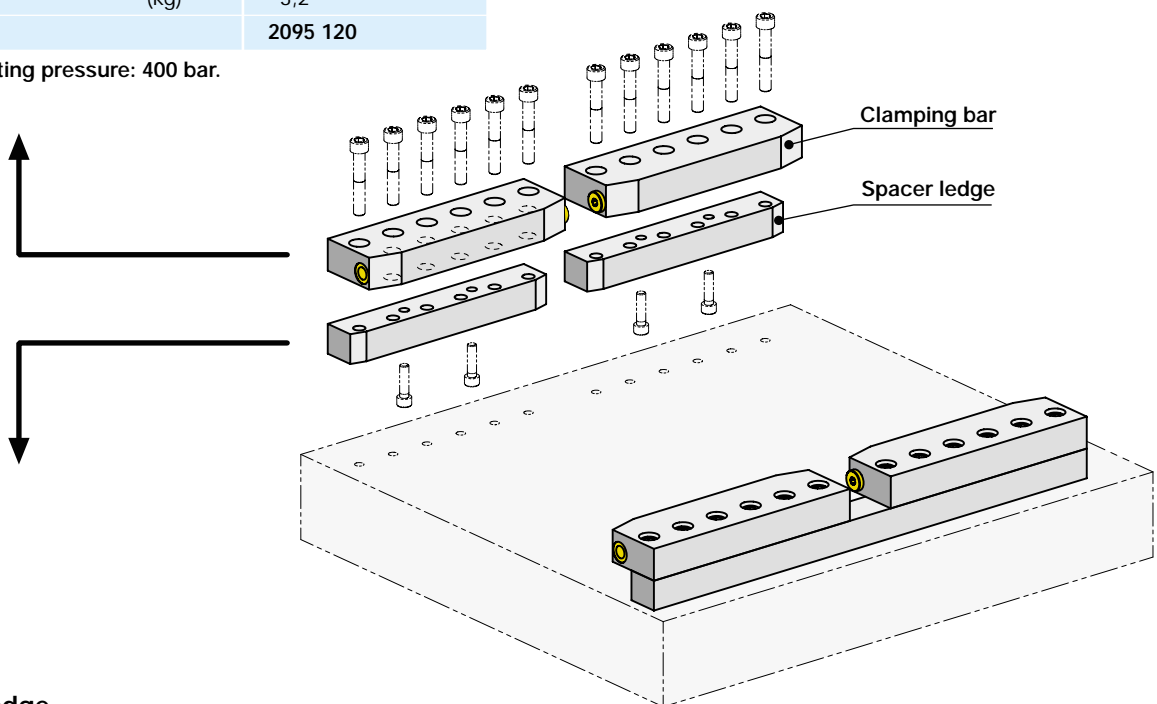
Clamping bar with press-in piston single-acting with spring return

Clamping bar



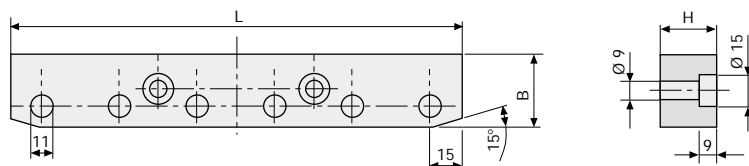
Clamping force at 400 bar (kN)		35,0
100 bar (kN)		8,7
Stroke	(mm)	6,0
Oil consumption	(cm ³)	5,3
Number of pistons		5,0
Piston Ø	(mm)	15,0
Weight	(kg)	3,2
Part no.		2095 120

Max. operating pressure: 400 bar.



Spacer ledge

for obtaining the required clamping edge height

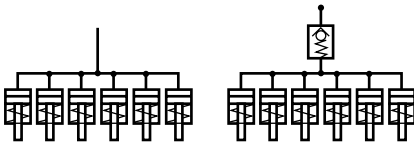


Length L	(mm)	220	220
Width W	(mm)	35	35
Height H	(mm)	28	43
for clamping edge (mm)		25 ±1,5	40 ±1,5
Part no.		5.2071.0040	5.2071.0071

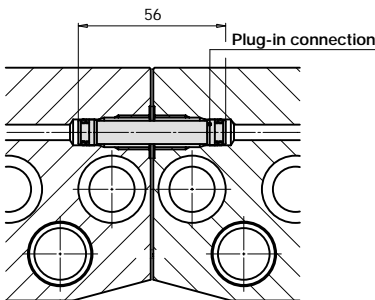
Other clamping edge heights H are available on request.



Clamping bar with built-in piston single-acting with spring return



Plug-in connection
for clamping bars
arranged in series
Part no. 8.0530.0040



Applications:

- stationary installed on press beds and rams
- on machines and equipment for clamping and locking
- clamping force up to 116 kN, piston stroke 8 mm

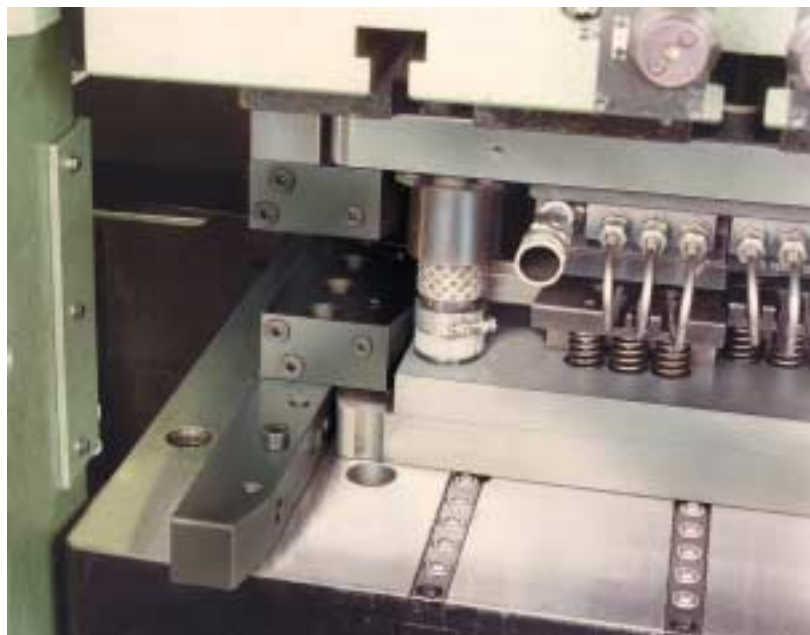
Function:

The clamping bar is mounted on the press bed or ram using a spacer ledge. Clamping on the die clamping edge by applying hydraulic pressure to the 2, 3 or 6 pistons which are arranged side by side, mechanical unclamping by a spring return. Hydraulic oil is supplied through G 1/4 ports provided on both sides. Flat design with die inlet chamfers.

When using several clamping bars in a row, the elements are interconnected by means of hoses or pipes.

Special features:

- piston stroke 8 mm
- design with or without check valve
- flat and compact design
- stroke limitation fully utilisable
- easy fastening
- suitable for retrofit

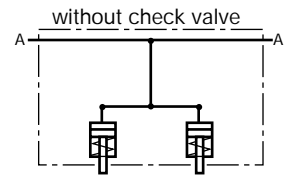
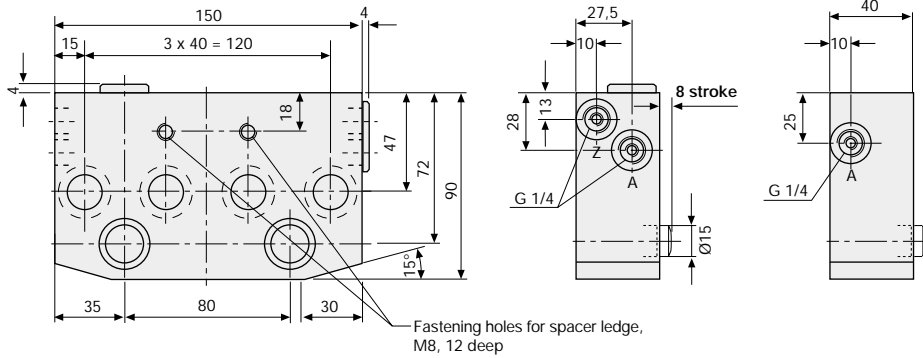


Retrofit of a double-column press.
Easy loading of dies using chamfered
spacer ledges and ball bars.

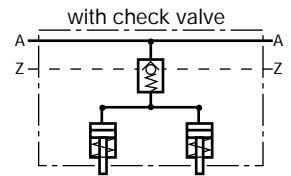


Clamping bar with built-in piston single-acting with spring return

Clamping force 38.6 kN with 400 bar, weight 3.9 kg

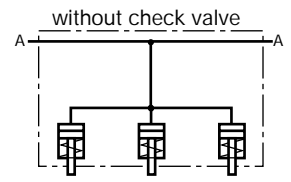
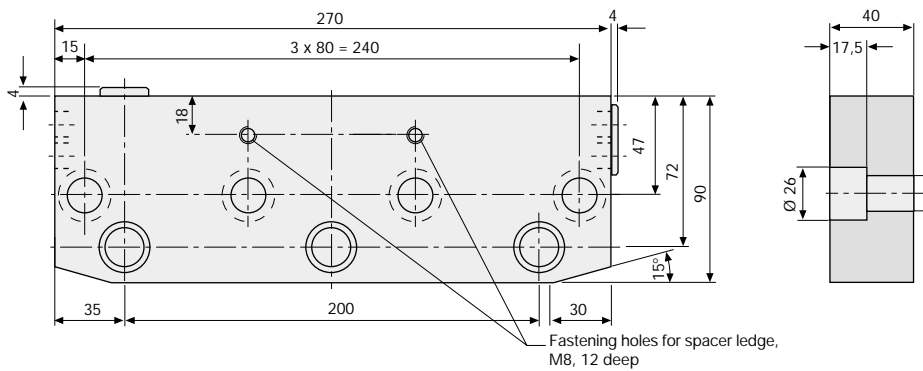


Part no. 8.2096.0650

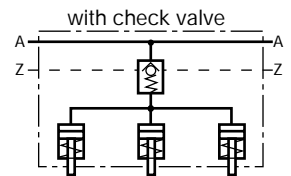


Part no. 8.2096.0750

Clamping force 58 kN with 400 bar, weight 6.9 kg

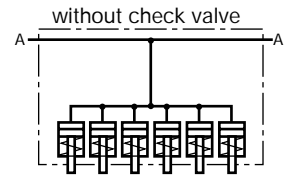
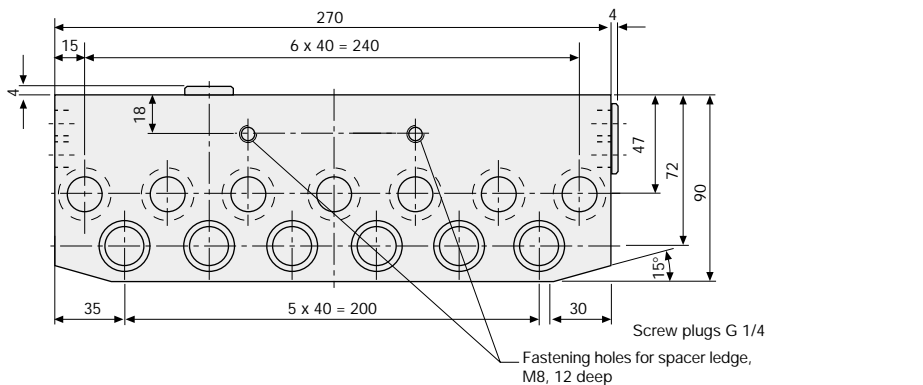


Part no. 8.2096.0450

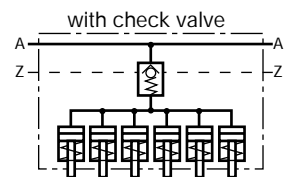


Part no. 8.2096.0550

Clamping force 16 kN with 400 bar, weight 7.2 kg

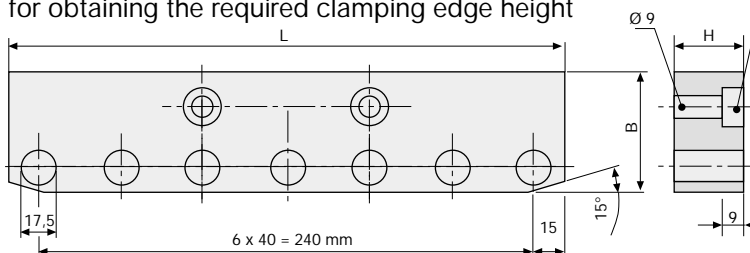


Part no. 8.2096.0850



Part no. 8.2096.1050

Spacer ledge
for obtaining the required clamping edge height



Length L	(mm)	270	270
Width W	(mm)	58	58
Height H	(mm)	28	53
for clamping edge	(mm)	25 ±1,5	50 ±1,5
Part no.		5.2071.0024	5.2071.0032

Other clamping edge heights H are available on request.