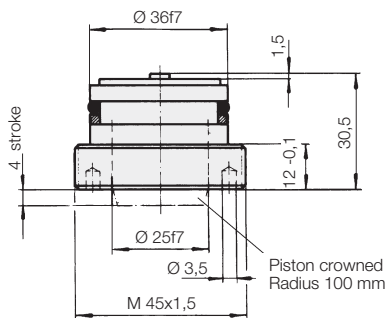




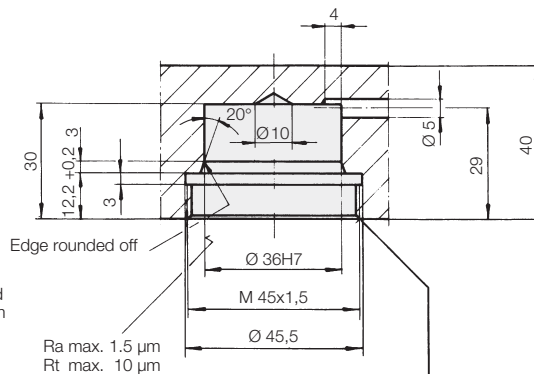
Screw-In Type Cylinder single acting with spring return max. operating pressure 500 bar



Element



Location hole



After assembly of cylinder, thread M 45 x 1.5 is secured by means of threaded pin AM 4 x 4 DIN 913

Application

Screw-in type cylinders can be installed in any position, depending on tool geometry and required clamping force. These basic elements give the design engineer optimum possibilities of configuration and arrangement.

Description

The cylinders are screwed into location holes in the clamping bar. Hydraulic oil is supplied through drilled passages in the fixture body. Thus, there is no disturbing pipework, and damage is avoided to a large extent.

Advantages

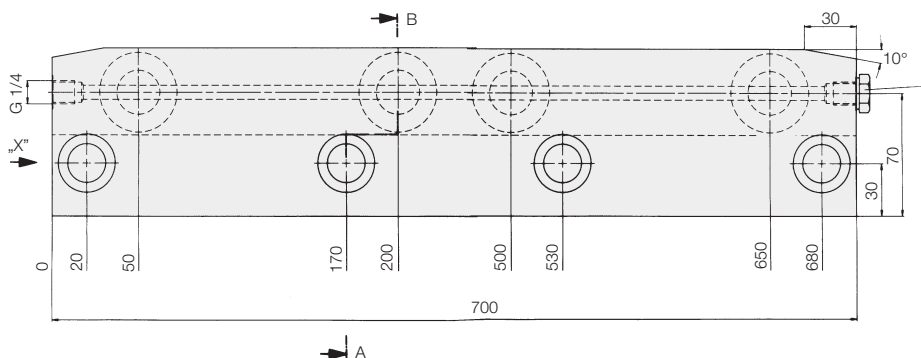
- thanks to their simple design, these cylinders can be universally used in a tool clamping device with hydraulic operation
- low built-in height
- easily interchangeable

Important notes

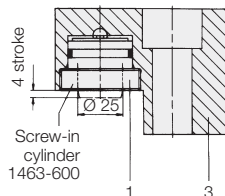
Operating conditions, tolerances, and other data, see data sheet A 0.100.

Clamping force at 500 bar	[kN]	24.5
Clamping force at 100 bar	[kN]	4.9
Piston Ø	[mm]	25
Max. oil requirement	[cm ³]	1.95
Min. oil pressure	[bar]	10
Stroke	[mm]	4
Part-no.		1463-600

Examples for installation in clamping bars



Section A-B



View "X"

