



Accessory for Position Monitoring

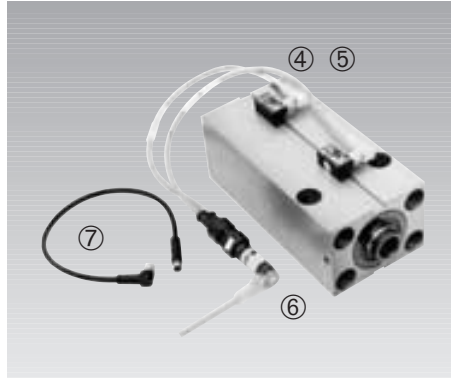


Pull-type connector pnp

- ① M8 knee-type, 2 LEDs, 5 m
Part-no. 3829-099
- ② M12 knee-type, 2 LEDs, 3 m
Part-no. 3829-049
- ③ M12 straight, without LED, 3 m
Part-no. 3829-078

Technical characteristics

Voltage	10 – 30 V DC
Protection DIN 40050	IP 67
Environmental temperature	–25°C up to 90°C
LED: Voltage	green
Function display	yellow



Y-distributor pnp

The Y-distributor allows connection of two proximity switches or magnetic sensors at a four-pole plug-type connector M12. For each hydraulic/pneumatic cylinder only one cable has to be placed. For easier adjustment of the switching points the right angle plugs M8 are equipped with two LEDs each, which indicate the operating voltage and the switching position. Plug-type connector M12 is equipped with three LEDs.

- ④ Y-distributor knee-type, 2 LEDs each, 0.3 m
Part-no. 3829-118
- ⑤ Y-distributor straight, without LED, 0.3 m
Part-no. 3829-125
- ⑥ Plug M12, four poles, 3 LEDs, 5 m
Part-no. 3829-106

Reversible step pnp → npn

The reversible step converts the pnp output signal of an inductive proximity switch or magnetic sensor to a npn signal.

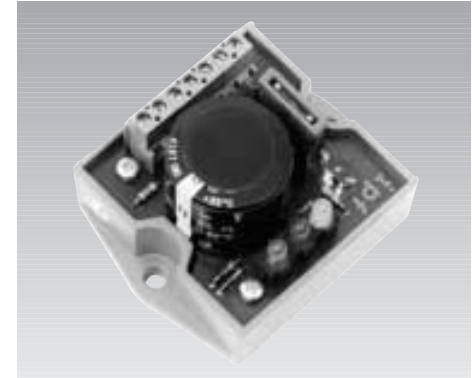
For each proximity switch one reversible step is required. It has to be placed between the proximity switch M 8x1 and the plug-type connector npn.

Maximum environmental temperature 70°C.

- ⑦ Reversible step pnp → npn, M8 → M8
Part-no. 3829-117
- ① Plug-type connector M8 npn, 2 LED
Part-no. 3829-124

Technical characteristics

Voltage	10 – 30 V DC
Protection DIN 40050	IP 67
Environmental temperature	–25°C up to +70°C
LED: Voltage	green
Function display	yellow



Voltage regulator unit

Power supply of position monitorings with existing mains supply circuits causes sometimes malfunctions or switch defects due to high ripple and spikes. The voltage regulator unit has to be connected between the existing supply point and the position monitorings and supplies a regulated output voltage with a residual ripple of max. 0.2%. This unit is suitable for all position monitorings of the Römheld product range.

Part-no. 3829-126

Technical characteristics

Input voltage	23 – 30 V AC/DC
Output voltage	24.6 V, regulated
Residual ripple	<0.2%
Output current	max. 0.8 A/max. 2 A*
Stray power	8 – 35 W
Environmental temperature	0°C up to 60°C

(*) for installation on a plain, metallic surface with thermal conduction paste

