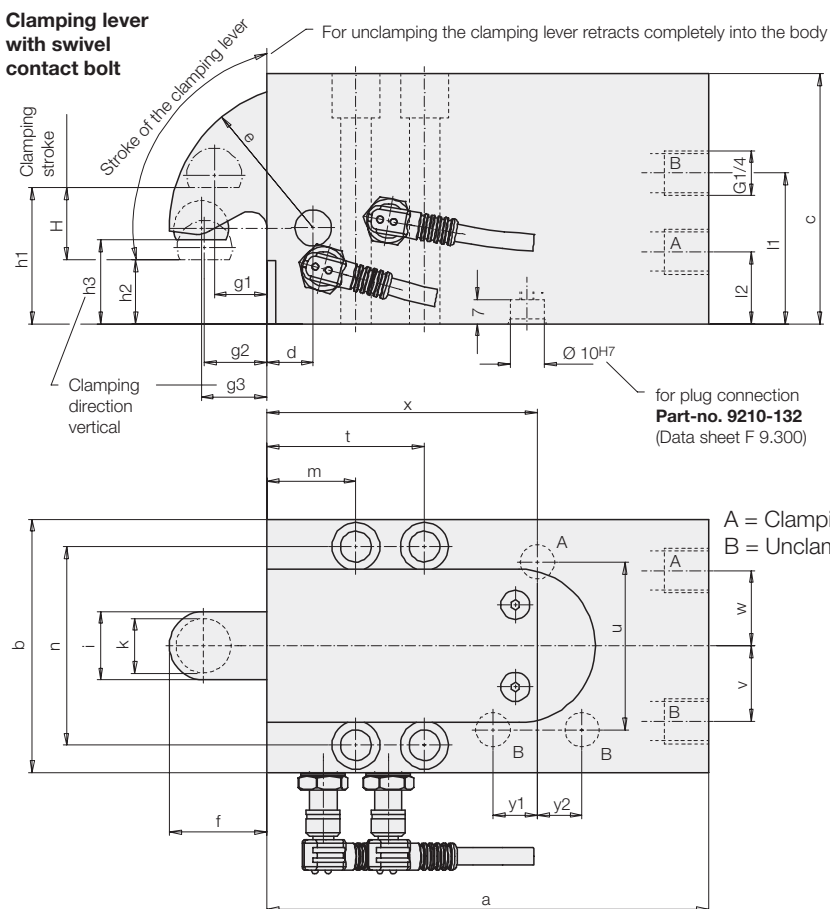


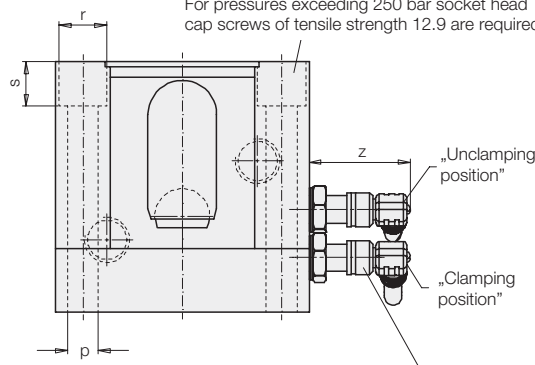


ROEMHELD

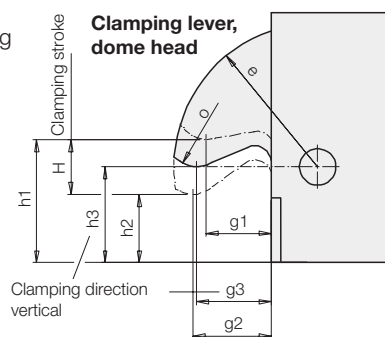
Clamping lever with swivel contact bolt



For pressures exceeding 250 bar socket head cap screws of tensile strength 12.9 are required



Accessory inductive proximity switch M 8x1 Type B, see data sheet 1.552 (optionally at the right or left side)



Accessories

Accessory	Part-no.
Screw plug G 1/4	3610-006
Plug connection NW5	9210-132
Ind. proximity switch	3829-098
Right angle plug with cable	3829-099

	Clamping lever dome head		with swivel contact bolt		dome head		with swivel contact bolt			
Clamping force at h3/h1	100 bar	2.5/2.8	2.7/2.9	4.3/4.7	4.4/4.7	500 bar	12.3/13.9	13.6/14.6	21.3/23.5	22/23.6
H Clamping stroke max.		[mm]	12	9	16					10
Oil volume clamping / unclamping		[cm ³]	9.57	5.65	20.11					12.25
a		[mm]	108.5	108.5	129					129
b		[mm]	60	60	75					75
c		[mm]	58.5	58.5	73.5					73.5
d		[mm]	10	10	13.5					13.5
e		[mm]	34	34	42					42
f		[mm]	24	24	28.5					28.5
g1		[mm]	16	14	18					17.5
g2		[mm]	20	16	22.5					19
g3		[mm]	19.5	16	22					19
h1 Clamping height, max.		[mm]	30	28	38					34.5
h2 Clamping height, min.		[mm]	18	19	22					24.5
h3 Clamping height, vertical clamping direction		[mm]	21	20	28					26
i		[mm]	15	15	20					20
k		[mm]	-	12	-					16
l1		[mm]	45	45	44					44
l2		[mm]	30	30	21					21
m		[mm]	20.5	20.5	26					26
n		[mm]	47	47	58					58
o		[mm]	6	-	8					-
p		[mm]	6.6	6.6	8.5					8.5
r		[mm]	11	11	13.5					13.5
s		[mm]	12	12	13					13
t		[mm]	40.5	40.5	46					46
u ±0.02		[mm]	42	42	44					44
v		[mm]	19	19	22					22
w		[mm]	19	19	0					0
x		[mm]	76.5	76.5	66					66
y1 ±0.02		[mm]	13	13	-					-
y2 ±0.02		[mm]	-	-	10					10
z		[mm]	32	32	29					29
Part-no.			1824-201	1824-202	1824-261					1824-262