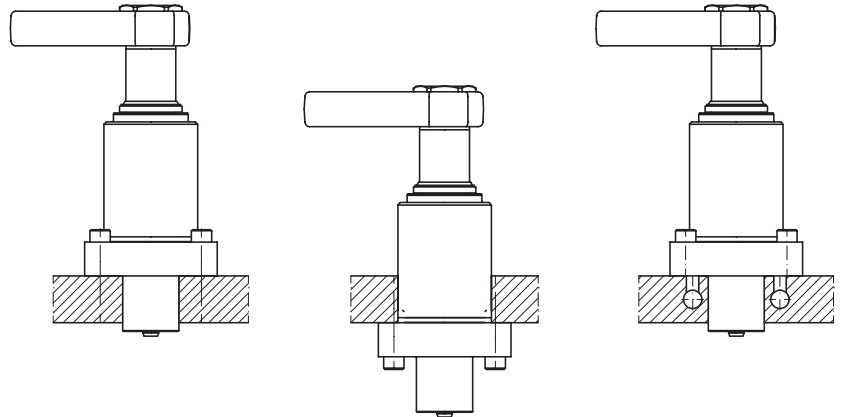




Swing Clamp, double acting, bottom flange-type version, without overload protection device, reinforced swing mechanism, switch rod for position control, max. operating pressure 500 bar



Installation possibilities



Application

Hydraulic swing clamps are used for clamping of workpieces when it is essential to keep the clamping area free of straps and clamping components for unrestricted workpiece loading and unloading. Due to the sturdy swing mechanism and the extended switch rod they are particularly suited for

- Clamping fixtures with workpiece loading via handling systems
- Transfer lines
- Test systems for motors, gears, axis, etc.
- Automatic manufacturing systems
- Assembly lines

Description

This line is a further development of the proved RÖMHELD swing clamps with the aim to improve process safety in linked clamping systems. The most important characteristics are as follows:

1. Omission of the overload protection device
In the case of a slight collision with the clamping arm during loading and unloading of the fixture, the angular position of the clamping arm will be maintained. Less critical are the weight of the clamping arm or an increased swing speed.

2. Reinforced swing mechanism

The reinforced swing mechanism endures a collision of the clamping arm with the workpiece during clamping up to a pressure of 100 bar.

3. Switch rod for position control

The helix rod protrudes through the cover and allows thereby a pneumatic or electrical control of the piston position outside the swarf area. As an accessory a pneumatic position control is available; the brass control slide being displaced in a stainless housing. The slide opens and closes bore holes, so that a pressure switch or a differential pressure switch can signal the position „Clamped“ and „Unclamped“. It is also possible to realise this control directly in the fixture body by means of drilled channels. An electrical position monitoring with inductive proximity switches is also available (see page 2).

4. Wiper VITON®

Has a high chemical resistance when using aggressive cutting fluids

5. Option: Metallic wiper

Protects the wiper VITON® against mechanical damage, e.g. by hot swarf. The swing clamp body is prepared for mounting of the metallic wiper. The wiper consists of a radially floating wiping disk and a retaining disk which will be pressed onto the existing collar.

6. Different types of bodies

Beside the version „Bottom Flange“ the versions „Top Flange“ (B 1.8801) and „Threaded-body type“ (B 1.8921) are available with the same equipment.

Important notes

Due to the missing overload protection device, assembly and disassembly of the clamping arm has to be made carefully despite the reinforced swing mechanism. When tightening and untightening the fixing nut, the clamping arm or the hexagon socket in the piston have to be backed up. It is recommended to effect tightening and untightening in the swivel area. Frequent collisions with the clamping arm in radial direction have to be avoided.

For interpretation of the pneumatic pressure we recommend to use the differential switches type PEL. Series connection for up to 8 swing clamps is possible.

Reference address:
MAWOMATIC MAYER WONISCH
MIETZEL GmbH
Donnerfeld 2
D-59757 Arnsberg
Phone +49 (0) 29 32 / 63 83 90
Fax +49 (0) 29 32 / 63 83 99

Further important notes
see page B 1.881.

VITON® wiper
standard



