

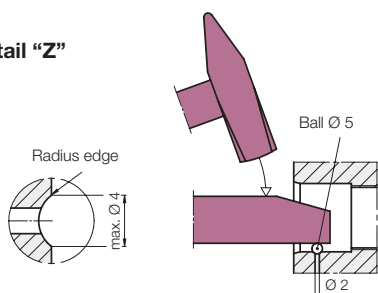


Mounting instructions

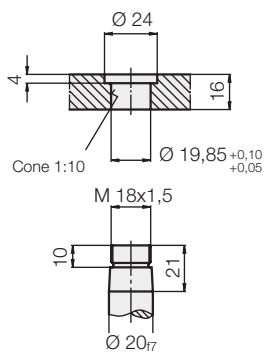
The screw-in thread must be cut with utmost care, especially in the area of the two joints. The round-off of the oil feed hole shown in detail "Z" is necessary or the lower O-ring will be damaged when screwed in. For this purpose there are two possibilities:

1. By means of a diameter 6 spherical grinder and a hand drill, the thread is deburred according to detail "Z".
2. A diameter 5 steel ball is gauged with a light hammer blow as shown in the figure below. A final check with a finger shows best whether the transitions are smooth and free of burrs.

Detail "Z"

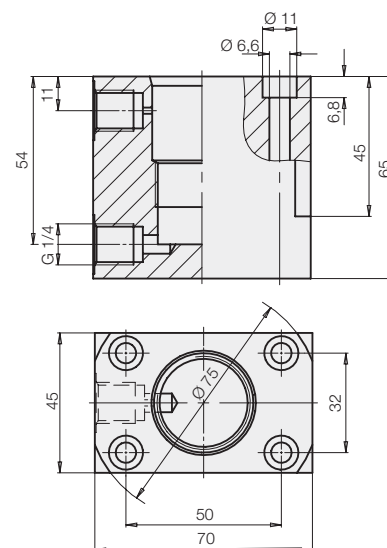


Strap attachment dimensions

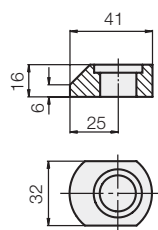


Connecting housing

for double acting swing clamp
Part-no. 3467-143

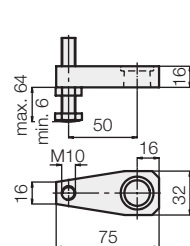


Clamping arm



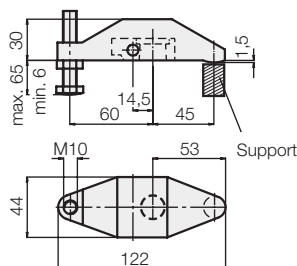
Weight [kg] 0.08
Part-no. 3548-159

Clamping arm, complete



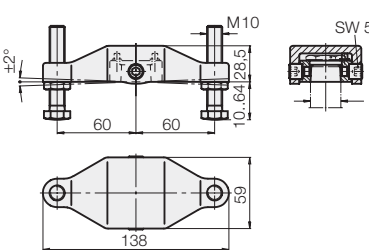
Weight [kg] 0.2
Part-no. 0354-001
Weight [kg] 0.18
Part-no. 3921-016
(without thread M 10)

Clamping strap, complete



Weight [kg] 0.57
Part-no. 0354-000

Double clamping arm assembly, complete



Weight [kg] 0.83
Part-no. 0354-131

Effective clamping force as a function of max. operating pressure p

