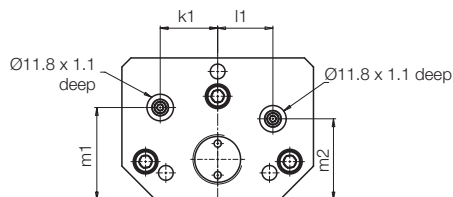




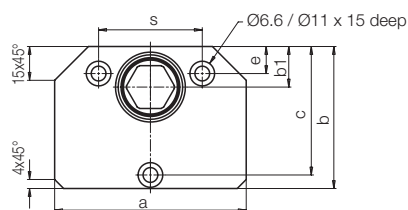
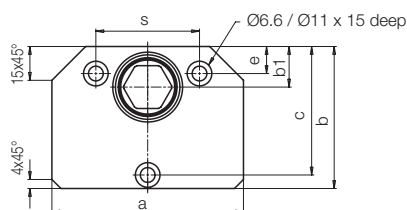
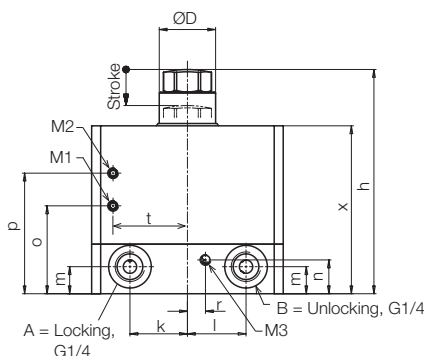
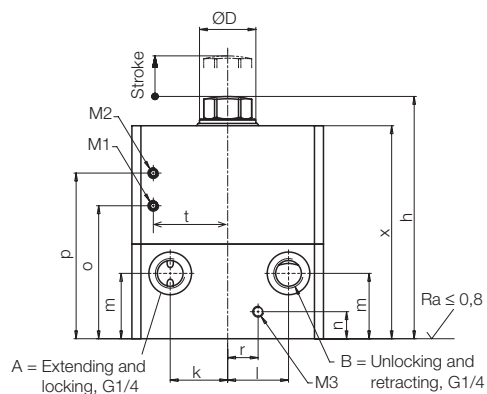
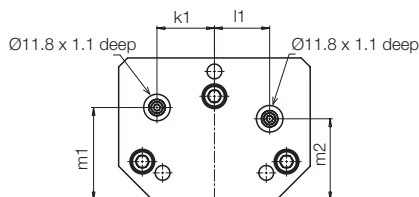


# ROEMHELD

1933-005



1933-025



**Notes:**

**1. Manifold mounting**

For manifold mounting remove screw with sealing (see bottom) and insert O-ring 9x1.5 (part-no. 3001-305) into the counterbore.

Connecting hole max. Ø 7 mm. Screw in plug G 1/4 (part-no. 3610-006).

**2. Pneumatic position control**

To operate the position control, remove the set screws (M5) and screw in insertion nipple fitting (part-no. 3890-091) or L-type insertion nipple fitting (part-no. 3890-094).

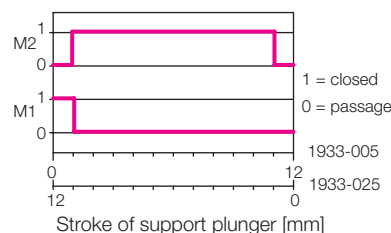
M1 – support plunger retracted, thread M5.

M2 – support plunger extended, thread M5.

M3 – do not close bleeding port, thread M5 (see important notes).

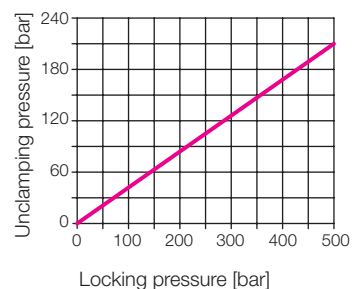
**Function chart**

**Pneumatic monitoring**



Support plunger Ø D	[mm]	25	25
Stroke of support plunger	[mm]	12	12
a	[mm]	85	85
b	[mm]	63	63
b1	[mm]	18	18
c	[mm]	57	57
e	[mm]	12	12
h	[mm]	107.5	99.5
k	[mm]	25.5	25.5
k1	[mm]	25.5	25.5
l	[mm]	27	26
l1	[mm]	24.5	24.5
m	[mm]	29	12
m1	[mm]	41	41
m2	[mm]	36	36
n	[mm]	12	15
o	[mm]	58	38
p	[mm]	73.5	53.5
r	[mm]	13.5	8
s	[mm]	46	46
t	[mm]	33	33
x	[mm]	94.5	74.5
Contact/spring force	[N]	23 up to 50	23 up to 50
Recommended minimum pressure	[bar]	100	100
Max. oil volume stroke / locking	[cm <sup>3</sup> ]	7.3	4.9
Max. oil volume return stroke	[cm <sup>3</sup> ]	9.5	8.4
Max. flow rate	[cm <sup>3</sup> /s]	25	25
Weight	[kg]	3.5	2.8
Dimensions O-ring		9 x 1.5	9 x 1.5
<b>Part-no.</b>		<b>1933-005</b>	<b>1933-025</b>
<b>Part-no. O-ring (VITON®)</b>		<b>3001-305</b>	<b>3001-305</b>

**Min. unclamping pressure as a function of the locking pressure**



Admissible load see diagram page 1